

GE-67-A.

Frame split, opens down,

Motor suspension, gear cover, axle and armature caps bolted to upper half,

Gear cover has two point suspension,

Grease lubrication,

Max. axle in motor bearings 4-1/2", length of bearing 8",

Armature bearings, pinion end, 3 x 8", commutator end 2-5/8 x 6-1/8",

Gearing, total teeth 84, pitch 3, Max. gear ratio 69/15,

Arm. Turns	Field Turns	Commercial H.P.	Arm. R.P.M.	Voltage	Amperes
3	110	40	520 505	500	73 72
4	125	35	340	500	64

Center of axle to bottom of gear cover, 12-3/16" (Maximum gear ratio)

" " " " " " motor, 12"

" " " " face of motor, 29"

" " " " " " suspension, 26-3/4"

Overall length of motor along armature shaft, 45"

Minimum distance between wheel hubs, 45-1/2"

Total weight including gear, pinion, gear cover for maximum gear ratio and axle lining, 2478 lbs.

Outlines, 87982-424

Diagrams 13593

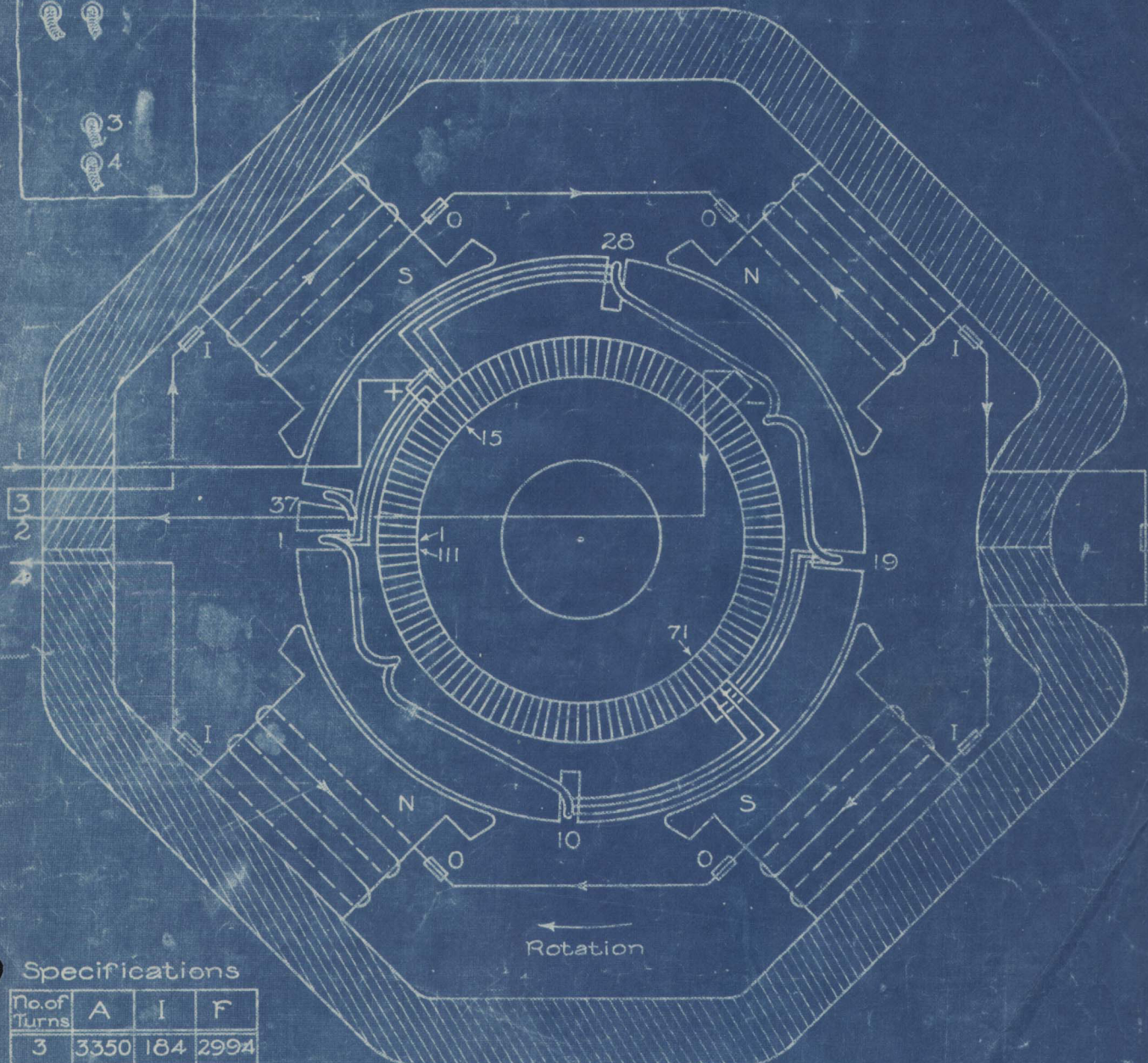
Photographs, 10638 - 10399

Nov. 11- 1907.

Return Tracking
to
PUBLICATION BUREAU

Armature and Field Winding for GE-67 Motor 500 Volts
 37 Slots
 Connections are also correct for GE-70 and GE-80 Motors
 500 Volts 37 Slots

Position of Leads



Specifications

No. of Turns	A	I	F
3	3350	184	2994
3	15857	833	2994

Changed 2 July 1900
 16 Dec. 1905

Checked E. D. Priest

Approved _____
 Engineering Dept. Chief Engineer

D.S. 845

General Electric Company

25 Sept. '99

G. E. 67-3T-500V MOTOR CHARACTERISTIC CURVES

4.6 P.P.D. 37 SLOT ARM. 110.5 TURN FIELDS

RESIST. 75°C

ARM .790

FIELD .337

BRUSHES .045

TOTAL 672

APPROVED: E. D. Sweet DEC 13 '30

IF SHEET IS READ THIS WAY (HORIZONTALLY), THIS MARGIN IS TOP.
IF SHEET IS READ THE OTHER WAY (VERTICALLY), THIS MUST BE LEFT-HAND SIDE.

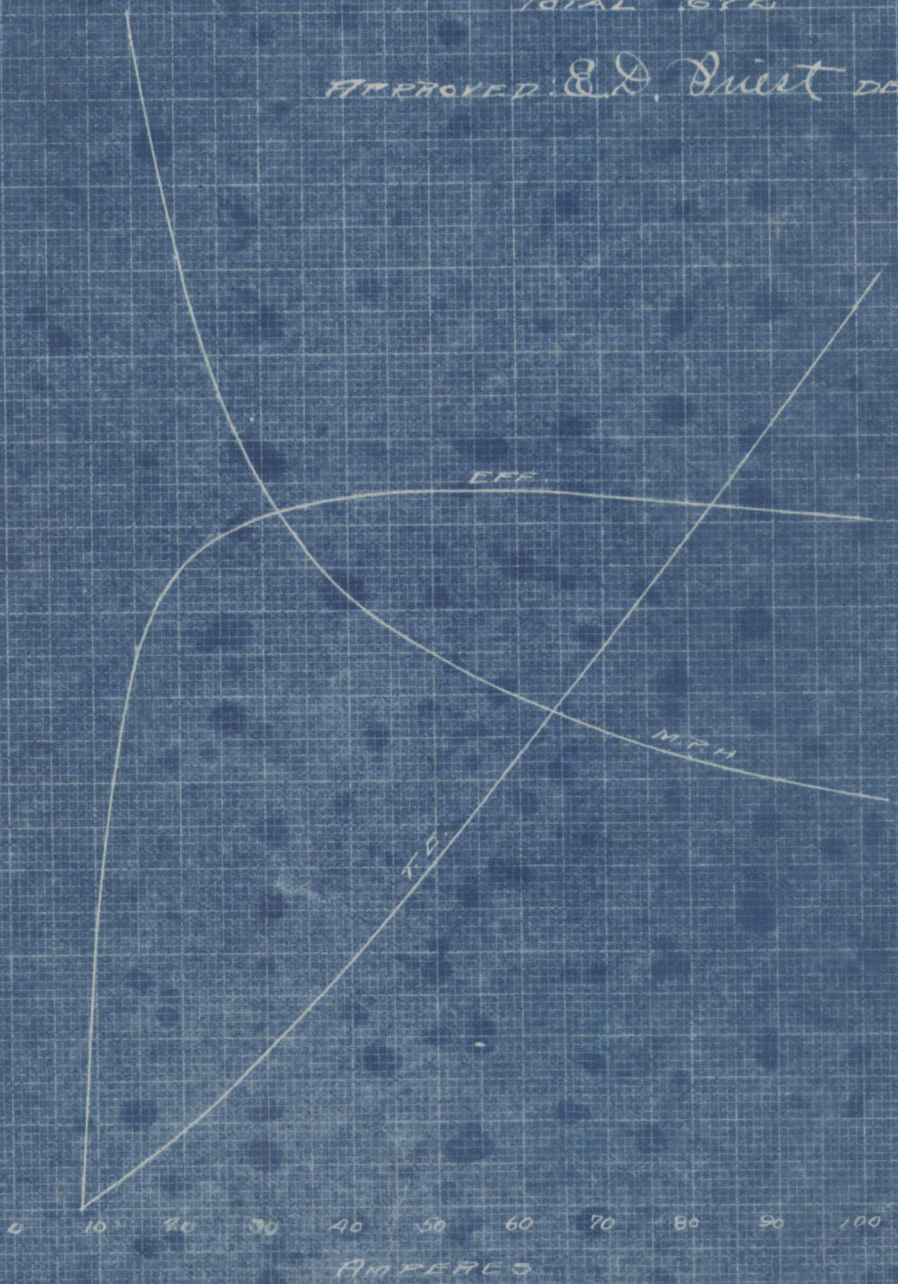
THIS MARGIN RESERVED FOR BINDING.

MILES PER HOUR (35 WHEELS)

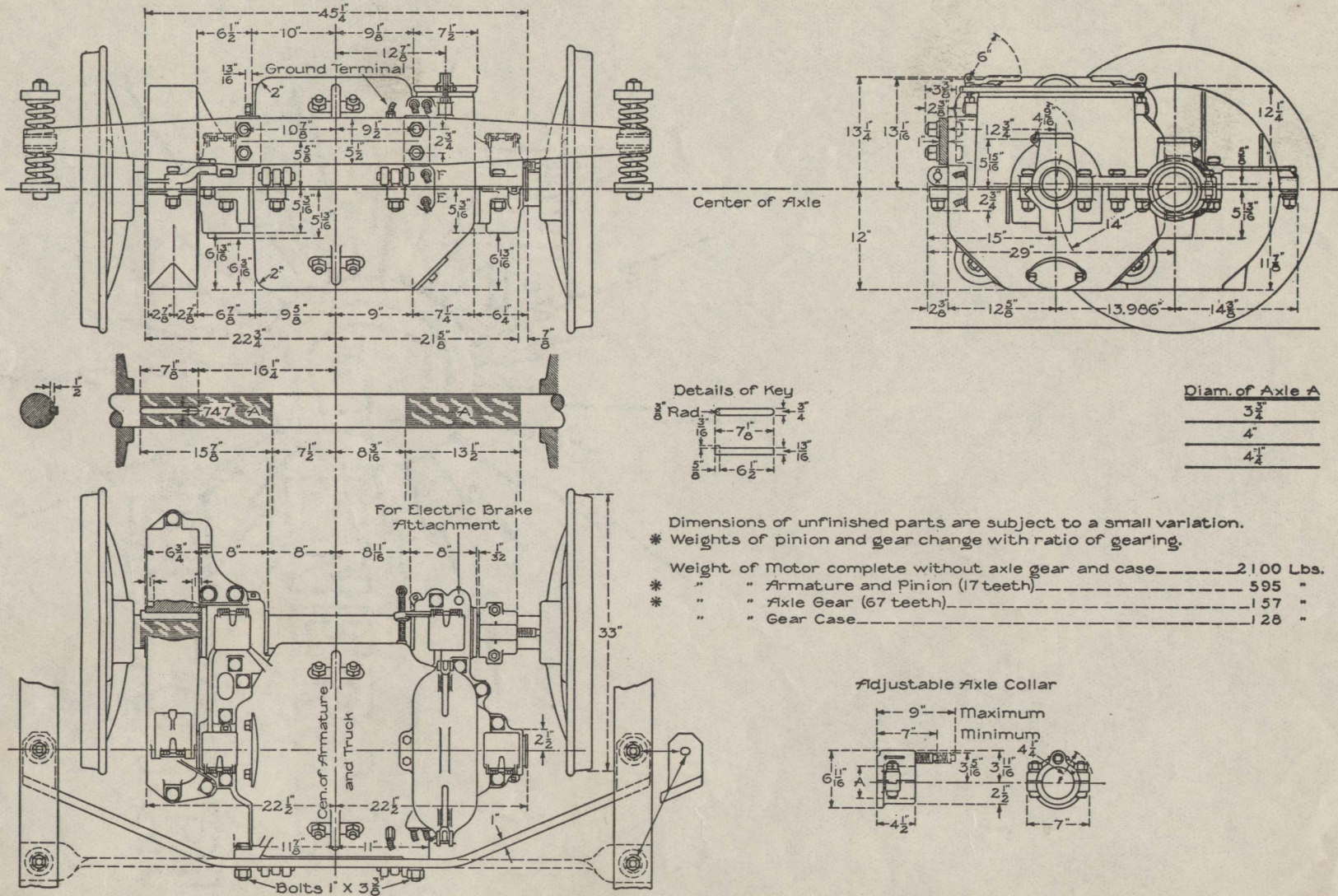
THRUSTIVE EFFORT

PER CENT EFFICIENCY

16	2600	
14	2400	
12	2200	
10	2000	100
8	1800	90
6	1600	80
4	1400	70
2	1200	60
1	1000	50
0.5	800	40
0.3	600	30
0.2	400	20
0.1	200	10



GE-67-A MOTOR YOKE SUSPENSION



Checked E. D. Priest

Engineering Dept.

Approved E. W. Rice
 Chief Engineer

No. 13593

General Electric Company

7 Dec. '99
 C.S.A.

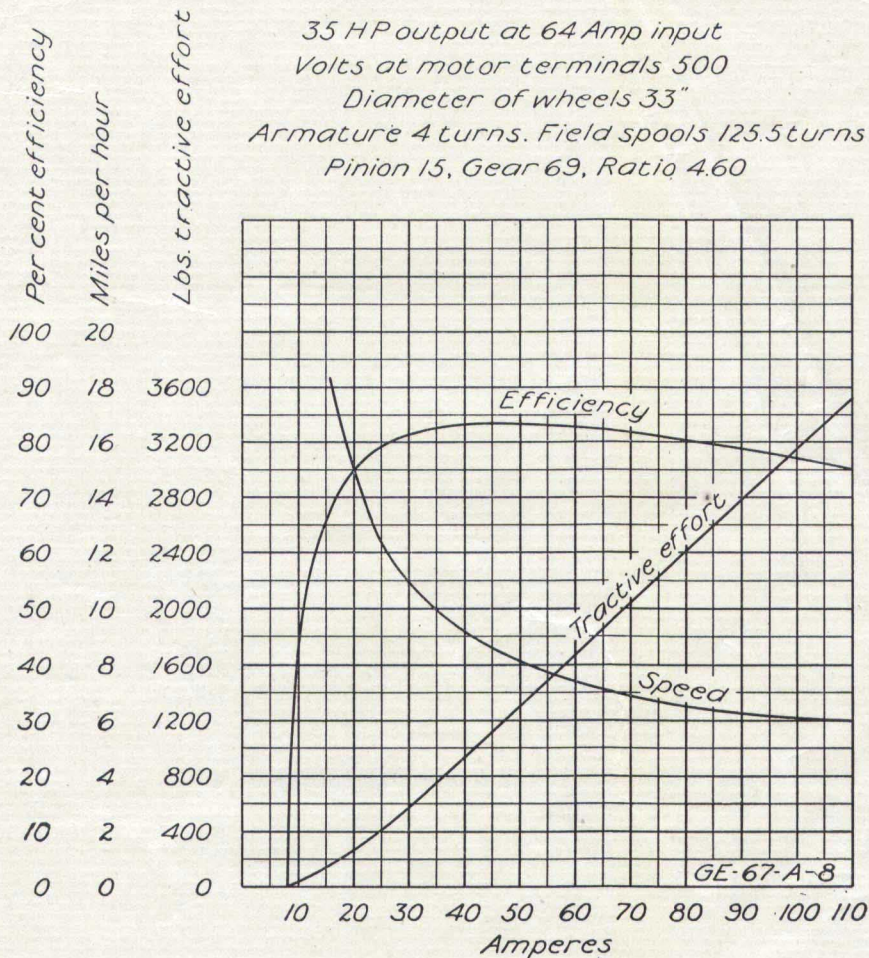
General Electric Co
Engineering Dept

Railway Motor
Characteristic No. 117

126

GE-67-A-8

35 HP output at 64 Amp input
Volts at motor terminals 500
Diameter of wheels 33"
Armature 4 turns. Field spools 125.5 turns
Pinion 15, Gear 69, Ratio 4.60



21 March 1904